



**Smith Center Elem -**  
**Smith Center USD 237**

216 South Jefferson, Smith Center, KS 66967-0329  
 (785) 282-6614  
 www.usd237.org  
 Principal: **Michelle Stamm**

District Accreditation Status: **Accredited**  
 ESSA Annual Meaningful Differentiation: **Meeting**  
 Grades: **PK-6**  
 Superintendent: **Joshua Lanning**

**Demographics**



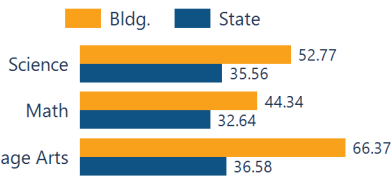
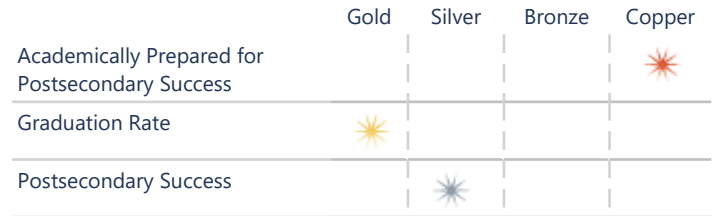
**236 Students**

- African American 1.69 %
- Hispanic 1.27 %
- Other 6.78 %
- White 90.25 %

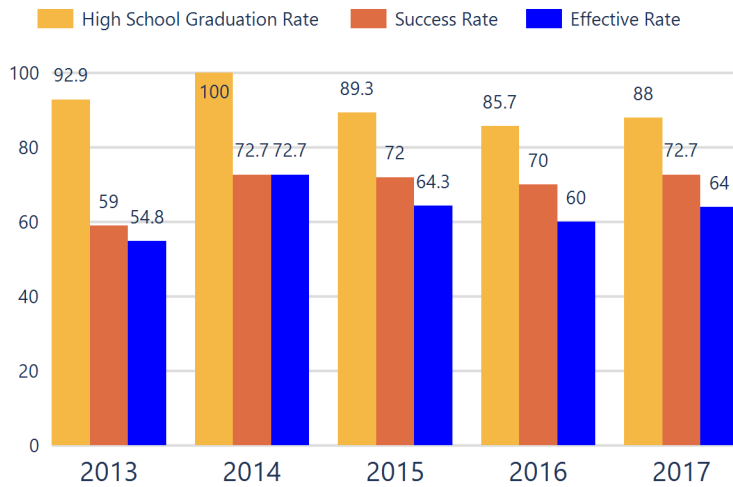
**Academically Prepared for Postsecondary Success**

The percentage of students who scored at Levels 3 and 4 on the state assessment.

**District Kansans Can Star Recognition**



**District Postsecondary Effectiveness**



**Kansans CAN lead the world!**  
 Graduation **95%**  
 Effective Rate 70-75%

**Five-Year Graduation Avg 91%**

**Five-Year Success Avg 68%**

**Five-Year Effective Avg 63%**

**95% Confidence Interval for the Predicted Effectiveness Rate 49.8 - 53.6%**

The numerator and denominator in the Five-Year Averages contain total student counts over five years (2012-2016).

- Graduation Rate:** The 4-year adjusted cohort graduation rate is the number of students who graduate in four years with a regular high school diploma divided by the number of students who entered high school as 9th graders four years earlier (adjusting for transfers in and out).
- Success Rate:** A student must meet one of the four following outcomes within two years of High School graduation.
  - Student earned an Industry Recognized Certification while in High School.
  - Student earned a Postsecondary Certificate.
  - Student earned a Postsecondary Degree.
  - Student enrolled in Postsecondary in both the first and second year following High School graduation.
- Effective Rate:** The calculated Graduation Rate multiplied by the calculated Success Rate.

**GRADUATION RATE**

The four-year adjusted cohort graduation rate is the percentage of students in a cohort, adjusted for transfers into and out of the school, district, or state, who graduate with a regular high school diploma within four years of entering high school.

**ATTENDANCE RATE**

Rate at which students are present at school, not including excused or unexcused absences.

**CHRONIC ABSENTEEISM**

Percentage of students who miss 10% or more of school days per year either with or without a valid excuse.

**DROPOUT RATE**

The dropout rate is calculated annually and reflects the number of seventh– twelfth grade students who drop out in any one school year. A dropout is any student who exits school between October 1 and September 30 with a dropout EXIT code AND does not re-enroll in school by September 30.

State: **School ESSA Expenditures Per Pupil**  
**N/A** 87.5  
 Expenditures reflect those for the normal day-to-day operation of schools as reported by the Local Education Agency. The following expenditures are excluded: capital outlay, school construction and building improvements, equipment and debt services.

State: **95.6%** 94.5  
**4.4%** 13.9  
 State: **N/A** 1.4

**\$12,067**  
 State: **\$11,415**

[Click here for State Financial Accountability.](#)



School Academic Success

State Assessment scores are displayed by student subgroup over three years time in three subjects: Math, English Language Arts (ELA), and Science.

ALL STUDENTS

	2016-17			2017-18			2018-19		
	Math	ELA	Sci	Math	ELA	Sci	Math	ELA	Sci
Level 1	20.35	10.61	8.33	9.48	11.96	15.00	13.91	12.06	11.11
Level 2	41.59	29.20	36.11	48.27	23.07	30.00	41.73	21.55	36.11
Level 3	30.97	38.93	30.55	33.62	48.71	30.00	38.26	50.00	30.55
Level 4	6.19	20.35	22.22	8.62	16.23	25.00	6.08	16.37	22.22

FREE AND REDUCED LUNCH STUDENTS

	2016-17			2017-18			2018-19		
	Math	ELA	Sci	Math	ELA	Sci	Math	ELA	Sci
Level 1	29.41	13.72	7.69	15.78	24.13	16.66	21.31	14.51	22.22
Level 2	39.21	37.25	61.53	47.36	17.24	25.00	40.98	25.80	27.77
Level 3	29.41	39.21	23.07	31.57	48.27	41.66	36.06	48.38	33.33
Level 4	1.96	9.80	7.69	5.26	10.34	16.66	1.63	11.29	16.66

STUDENTS WITH DISABILITIES

	2016-17			2017-18			2018-19		
	Math	ELA	Sci	Math	ELA	Sci	Math	ELA	Sci
Level 1	46.66	46.66	N/A	36.36	47.82	N/A	50.00	45.83	N/A
Level 2	40.00	53.33	N/A	59.09	26.08	N/A	37.50	37.50	N/A
Level 3	13.33	0.00	N/A	4.54	21.73	N/A	12.50	16.66	N/A
Level 4	0.00	0.00	N/A	0.00	4.34	N/A	0.00	0.00	N/A

AFRICAN-AMERICAN STUDENTS

	2016-17			2017-18			2018-19		
	Math	ELA	Sci	Math	ELA	Sci	Math	ELA	Sci
Level 1	N/A	N/A	N/A	N/A	N/A	N/A	N/A	N/A	N/A
Level 2	N/A	N/A	N/A	N/A	N/A	N/A	N/A	N/A	N/A
Level 3	N/A	N/A	N/A	N/A	N/A	N/A	N/A	N/A	N/A
Level 4	N/A	N/A	N/A	N/A	N/A	N/A	N/A	N/A	N/A

HISPANIC STUDENTS

	2016-17			2017-18			2018-19		
	Math	ELA	Sci	Math	ELA	Sci	Math	ELA	Sci
Level 1	N/A	N/A	N/A	N/A	N/A	N/A	N/A	N/A	N/A
Level 2	N/A	N/A	N/A	N/A	N/A	N/A	N/A	N/A	N/A
Level 3	N/A	N/A	N/A	N/A	N/A	N/A	N/A	N/A	N/A
Level 4	N/A	N/A	N/A	N/A	N/A	N/A	N/A	N/A	N/A

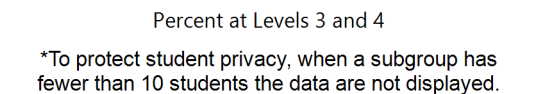
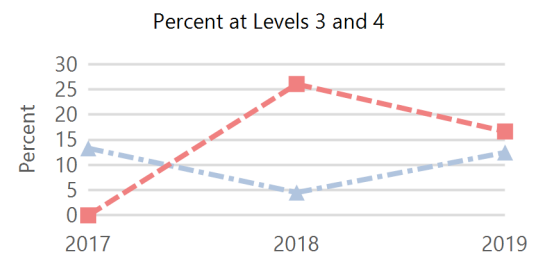
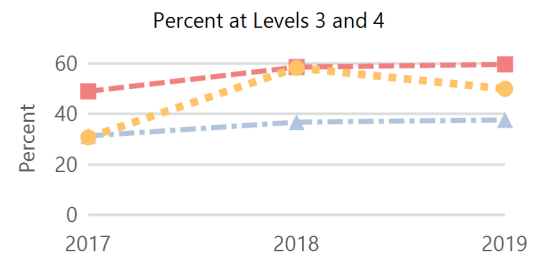
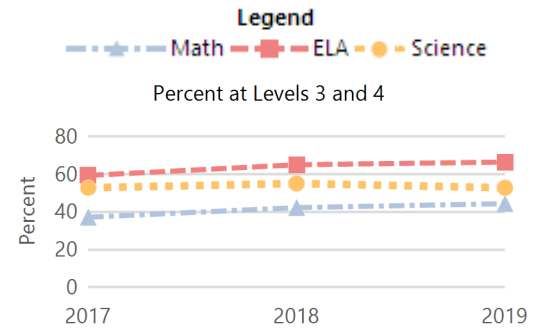
N/A: To protect student privacy, when a subgroup has fewer than 10 students, the data are not displayed.

ACT Performance (2018 School Year)

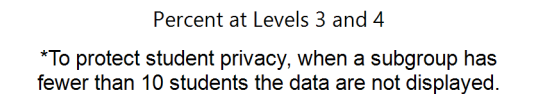
ACT is a national college admissions exam that includes subject level tests in English, Math, Reading and Science. Students receive scores that range from 1 to 36 on each subject and an overall Composite score. This report provides the average Composite score for the 2018 graduating seniors who took the ACT as sophomores, juniors, or seniors.

Note: Not all eligible students completed an ACT.

Academically Prepared for Postsecondary Success



\*To protect student privacy, when a subgroup has fewer than 10 students the data are not displayed.



\*To protect student privacy, when a subgroup has fewer than 10 students the data are not displayed.

Building

State

21.6